



## 1 bed apartment to buy in NE24

Cromwell Court, Blyth, Blyth,  
Northumberland, NE24 5BR

**£35,000** Starting Bid

 x1  x1  x1

Tenure

**Leasehold**

Allocated parking

## Property features

- ✓ One Bedroom Apartment
- ✓ Ground Floor
- ✓ Allocated Parking
- ✓ Electric Heating
- ✓ EPC Rating C

## Key Information

- ✓ Council Tax: Band A
- ✓ EPC Rating: C
- ✓ Heating supply: Electric

## Description

**\*\* ONE BEDROOM \*\* GROUND FLOOR APARTMENT \*\* OVER 50'S ONLY \*\* MUST BE VIEWED \*\***

Viewing is highly recommended to appreciate this modern ground floor apartment situated in Cromwell Court, Blyth, close to town centre, local amenities and transport links. Tenant In Situ £420 PCM.

Comprising; Communal Entrance, Entrance Hallway, Lounge, Fitted Kitchen, Bedroom, Bathroom/Wc. Double Glazing, Electric Heating System, Allocated Parking, Security Entrance, Communal Garden. This property is only available to persons aged 50 and over. Call Pattinson Team Blyth or email [blyth@pattinson.co.uk](mailto:blyth@pattinson.co.uk)

For sale through Pattinson Auction under Conditional Terms.

Council Tax Band: A

Tenure: Leasehold

Length of Lease: In Files

Annual Service Charge Amount: £183.00

Service Charge Review Period: PER MONTH

Price: Starting Bid £35,000

Property Type: Apartment

Parking: Allocated

Heating: Electric

## Communal Entrance

Door to Apartment.

---

## Entrance Hallway

Wall mounted electric heater, alarm system, built in cupboard.

---

## Lounge

5.60m x 2.10m (18'4" x 6'10")

Two double glazed windows, wall mounted electric heater, intercom telephone, TV point, telephone point, coving.



## Kitchen

2.00m x 2.40m (6'6" x 7'10")

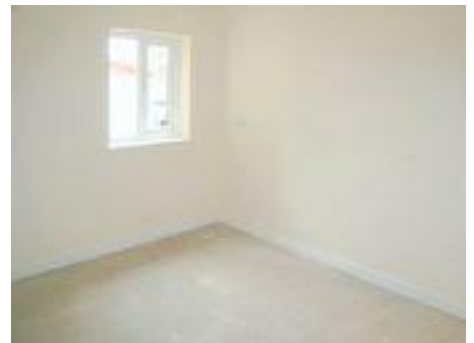
Modern style fitted wall and base units, stainless steel sink unit, single sink and drainer with mixer tap, tiled splashback, built in oven and hob with extractor hood over. Integrated fridge/freezer and washing machine, ceiling spotlights, Double glazed window.



## Bedroom

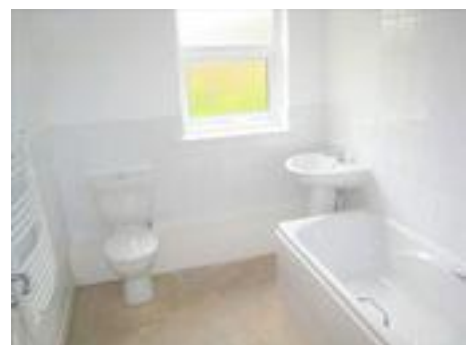
3.30m x 3.20m (10'9" x 10'5")

Double glazed window, wall mounted electric heater, fitted wardrobes.



## Bathroom

Modern white bathroom suite comprising; low level Wc, panelled bath with shower over, pedestal wash hand basin, towel rail.



## Externally

Communal gardens.





Energy Efficiency Rating		
	Current	Potential
<i>Very energy efficient - lower running costs</i>		
(92-100) <b>A</b>		
(81-91) <b>B</b>		82
(69-80) <b>C</b>	74	
(55-68) <b>D</b>		
(39-54) <b>E</b>		
(21-38) <b>F</b>		
(1-20) <b>G</b>		
<i>Not energy efficient - higher running costs</i>		
<b>England, Scotland &amp; Wales</b>	EU Directive 2002/91/EC	

Cromwell Court, Blyth, Blyth, Northumberland, NE24 5BR

Contact your local branch today for more information on this property:  
**126A Trinity Street, Huddersfield, West Yorkshire, HD1 4DT, Tel: 01484 506211,**  
**admin@yellowbrickroadestateagents.co.uk, www.ybrea.co.uk**

These particulars, whilst believed to be accurate are set out as a general outline only for guidance and do not constitute any part of an offer or contract. Intending purchasers should not rely on them as statements of representation of fact, but must satisfy themselves by inspection or otherwise as to their accuracy. No person in this firm's employment has the authority to make or give any representation or warranty in respect of the property.

