



## 2 bed semi-detached house to buy in NE23

Scott Avenue, Nelson Village, Cramlington, Northumberland, NE23 1HE

# £135,000

🏠 x2 🚗 x1 🚻 x1

Tenure

**Freehold**

Driveway parking

## Property features

- ✓ Great location
- ✓ Two bedrooms
- ✓ Driveway
- ✓ West facing garden
- ✓ EPC Rating C

## Key Information

- ✓ Council Tax: Band A
- ✓ EPC Rating: C
- ✓ Heating supply: Gas

## Description

A well presented, two bedroom semi-detached home situated in the popular Nelson Village in Cramlington. Ideally located close to Cramlington train station, local shops and well regarded schools, this property is perfect for first time buyers, small families or investors.

The accommodation comprises of an entrance hallway, spacious lounge, and fitted kitchen with patio doors leading to a west facing rear garden — ideal for enjoying afternoon and evening sunshine.

To the first floor are two good sized bedrooms and a family bathroom.

Externally, the property benefits from a driveway to the front providing off-street parking, along with an enclosed rear garden.

Early viewing is highly recommended.

Council Tax Band: A

Tenure: Freehold

Price: £135,000

Property Type: Semi-detached house

Parking: Driveway

Heating: Gas

## Living Room



## Kitchen



## Bedroom 1



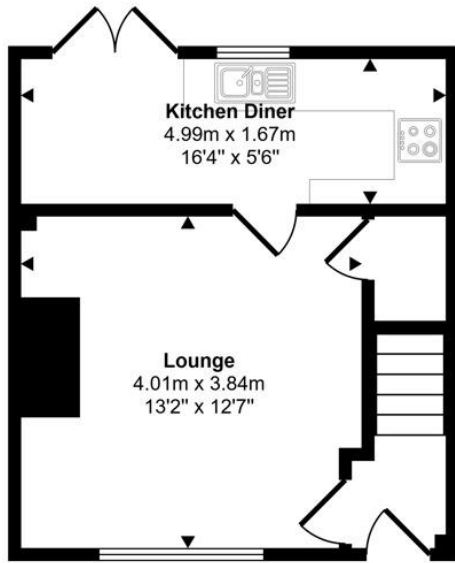
## Bathroom



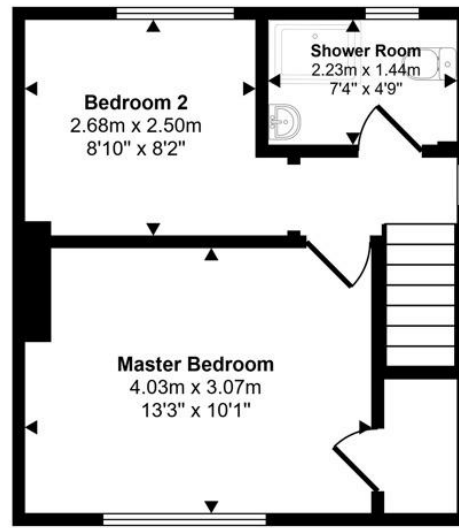
## Bedroom 2



Approx Gross Internal Area  
57 sq m / 613 sq ft



Ground Floor  
Approx 28 sq m / 303 sq ft



First Floor  
Approx 29 sq m / 310 sq ft

This floorplan is only for illustrative purposes and is not to scale. Measurements of rooms, doors, windows, and any items are approximate and no responsibility is taken for any error, omission or mis-statement. Icons of items such as bathroom suites are representations only and may not look like the real items. Made with Made Snappy 360.

Energy Efficiency Rating		
	Current	Potential
<i>Very energy efficient - lower running costs</i>		
(92-100) <b>A</b>		
(81-91) <b>B</b>		85
(69-80) <b>C</b>	71	
(55-68) <b>D</b>		
(39-54) <b>E</b>		
(21-38) <b>F</b>		
(1-20) <b>G</b>		
<i>Not energy efficient - higher running costs</i>		
<b>England, Scotland &amp; Wales</b>	EU Directive 2002/91/EC	

Scott Avenue, Nelson Village, Cramlington, Northumberland, NE23 1HE

Contact your local branch today for more information on this property:

**126A Trinity Street, Huddersfield, West Yorkshire, HD1 4DT, Tel: 01484 506211,  
admin@yellowbrickroadestateagents.co.uk, www.ybrea.co.uk**

These particulars, whilst believed to be accurate are set out as a general outline only for guidance and do not constitute any part of an offer or contract. Intending purchasers should not rely on them as statements of representation of fact, but must satisfy themselves by inspection or otherwise as to their accuracy. No person in this firm's employment has the authority to make or give any representation or warranty in respect of the property.

