



2 bed end of terrace house to buy in NE23

Mallard Street, Barley Meadows,
Cramlington, Northumberland, NE23 6DA

£180,000 Offers Over

 x2  x1  x1

Tenure

Freehold

Driveway parking

Property features

- ✓ Spacious living/dining room
- ✓ Great location with travel links
- ✓ Two generous double bedrooms
- ✓ South Westerly facing rear garden
- ✓ EPC Rating B

Key Information

- ✓ Council Tax: Band B
- ✓ EPC Rating: B
- ✓ Heating supply: Gas

Description

Presenting this superb end terrace home, beautifully maintained and situated within a modern, sought-after estate in Cramlington. Boasting excellent road links, this property sits within easy reach of the town's amenities and is just a short distance from Cramlington hospital.

Inside, discover a spacious living and dining room offering space for relaxing or entertaining guests. The home features two generous double bedrooms, ideal for first time homeowners and those desiring extra space and comfort. Finished to an excellent standard, each room reflects a high level of care and attention to detail.

Outside, a delightful south/west-facing garden awaits, perfect for enjoying sunshine from mid-morning through to the evening, and hosting gatherings. Side access to the garden enhances practicality, while the private driveway ensures secure and convenient parking at all times.

The property has great access to local walking routes, making it an ideal base for those who enjoy outdoor pursuits, dog walking, or leisurely strolls. With excellent transport connections, schools, and the vibrant amenities of Cramlington close by, this home offers both comfort and convenience.

Opportunities like this don't come up often—arrange a viewing to appreciate all this exceptional property has to offer.

Council Tax Band: B

Tenure: Freehold

Price: Offers Over £180,000

Property Type: End of terrace house

Parking: Driveway

Heating: Gas

Entrance hallway



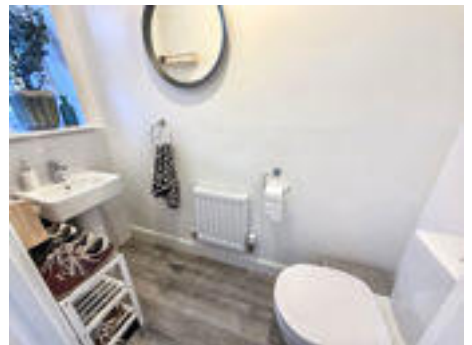
Living Room



Kitchen



Cloaks W/C



Landing



Bedroom 1



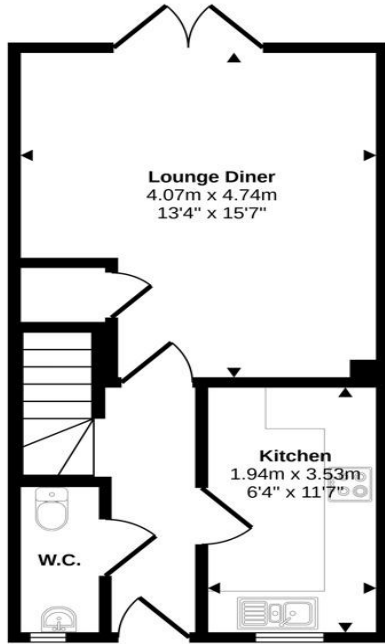
Bedroom 2



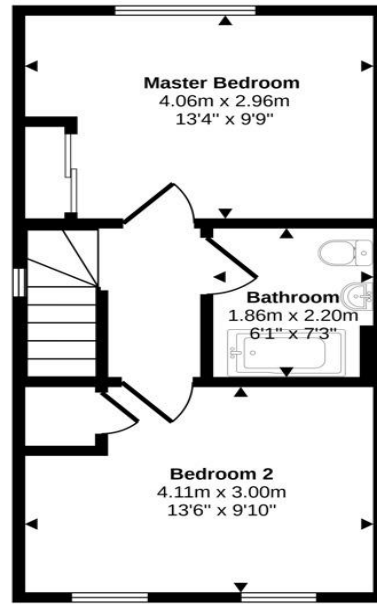
Bathroom



Approx Gross Internal Area
69 sq m / 739 sq ft



Ground Floor
Approx 34 sq m / 368 sq ft



First Floor
Approx 34 sq m / 371 sq ft

This floorplan is only for illustrative purposes and is not to scale. Measurements of rooms, doors, windows, and any items are approximate and no responsibility is taken for any error, omission or mis-statement. Icons of items such as bathroom suites are representations only and may not look like the real items. Made with Made Snappy 360.

Energy Efficiency Rating		
	Current	Potential
<i>Very energy efficient - lower running costs</i>		
(92-100) A		97
(81-91) B	83	
(69-80) C		
(55-68) D		
(39-54) E		
(21-38) F		
(1-20) G		
<i>Not energy efficient - higher running costs</i>		
England, Scotland & Wales		EU Directive 2002/91/EC

Mallard Street, Barley Meadows, Cramlington, Northumberland, NE23 6DA

Contact your local branch today for more information on this property:

**126A Trinity Street, Huddersfield, West Yorkshire, HD1 4DT, Tel: 01484 506211,
admin@yellowbrickroadestateagents.co.uk, www.ybrea.co.uk**

These particulars, whilst believed to be accurate are set out as a general outline only for guidance and do not constitute any part of an offer or contract. Intending purchasers should not rely on them as statements of representation of fact, but must satisfy themselves by inspection or otherwise as to their accuracy. No person in this firm's employment has the authority to make or give any representation or warranty in respect of the property.

