



### 3 bed detached house to buy in

Juniper Lane, Meadow Hill, Newcastle upon Tyne, Tyne and Wear, NE15 9FQ

# £280,000

🏠 x3 🚗 x2 🚲 x1

Tenure

**Freehold**

Driveway parking

### Property features

- ✓ Detached House
- ✓ Three Bedrooms
- ✓ Off Street Parking
- ✓ Viewing Recommended
- ✓ EPC Rating B

## Key Information

- ✓ Council Tax: Band D
- ✓ EPC Rating: B
- ✓ Heating supply: Air Source Heat Pump

## Description

Located in the highly regarded Meadow Hill development in Throckley, this superb three-bedroom detached home on Juniper Drive offers a modern lifestyle with high-quality finishes throughout. Built by the respected housebuilder Cussins, the property has been thoughtfully upgraded, making it an ideal choice for families and professionals alike.

Upon entering, you are welcomed by a spacious entrance hall with a convenient cloakroom and WC. The full-length lounge is bright and airy, enhanced by three large windows that allow natural light to pour in, creating a warm and inviting atmosphere. At the rear of the home, the generous kitchen diner is finished to a high standard with beautifully painted units, integrated appliances, and impressive bifold doors that open directly onto the side garden, offering a seamless flow between indoor and outdoor living. The adjoining utility room provides additional storage, is plumbed for a washing machine, and offers practical workspace to help keep the main living areas organised and clutter-free. Upstairs, the home features three well-proportioned bedrooms. The master bedroom benefits from a stylish en-suite bathroom, while the remaining bedrooms are served by a modern family bathroom, both finished to an excellent standard.

Outside, the property boasts a driveway with parking for multiple vehicles, along with an upgraded electric vehicle charging point. The garden wraps around the side and rear of the property, providing a calm and private outdoor space that's perfect for relaxation, entertaining, or enjoying time with family. The surrounding neighbourhood is designed with nature in mind, with open meadows, walking routes, and a landscape that supports local wildlife.

With excellent access to Newcastle city centre, the A69, and Newcastle International Airport, this home offers the ideal combination of contemporary living and a calm, well-connected setting. Early viewing is strongly recommended to appreciate the quality and lifestyle this home provides.

Council Tax Band: D

Tenure: Freehold

Price: £280,000

Property Type: Detached House

USPs: New build

Parking: Driveway

Heating: Air Source Heat Pump

## Entrance Hall

---

## Cloak/WC

---

## Lounge

5.81m x 3.17m (19'0" x 10'4")



## Kitchen Diner

5.81m x 3.10m (19'0" x 10'2")



## Utility Room

2.03m x 1.83m (6'7" x 6'0")



## Stairs to First Floor

---

## Bedroom One

3.45m x 3.27m (11'3" x 10'8")



## En-Suite

3.73m x 3.17m (12'2" x 10'4")



## Bedroom Two

3.73m x 3.17m (12'2" x 10'4")



## Bedroom Three

3.12m x 2.26m (10'2" x 7'4")



## Bathroom

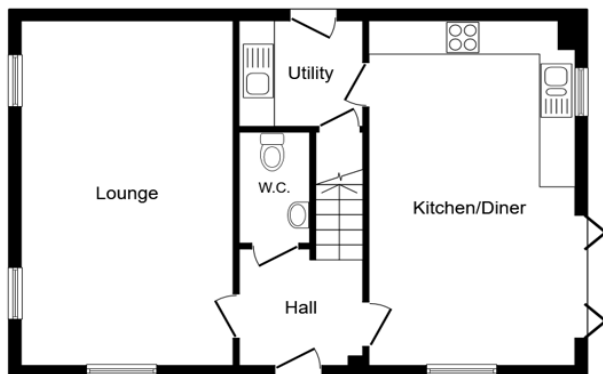


## External

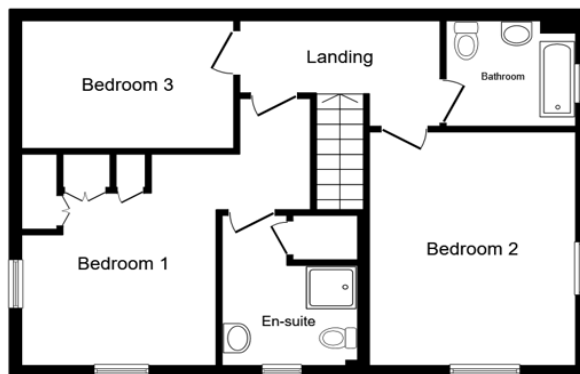


## Driveway





Ground Floor



First Floor

This floor plan is for illustrative purposes only. It is not drawn to scale. Any measurements, floor areas (including any total floor area), openings and orientations are approximate. No details are guaranteed, they cannot be relied upon for any purpose and do not form any part of any agreement. No liability is taken for any error, omission or misstatement. A party must rely upon its own inspection(s). Powered by www.Propertybox.io

Energy Efficiency Rating		Current	Potential
<i>Very energy efficient - lower running costs</i>			
(92-100) <b>A</b>			94
(81-91) <b>B</b>		84	
(69-80) <b>C</b>			
(55-68) <b>D</b>			
(39-54) <b>E</b>			
(21-38) <b>F</b>			
(1-20) <b>G</b>			
<i>Not energy efficient - higher running costs</i>			
<b>England, Scotland &amp; Wales</b>		EU Directive 2002/91/EC	

Juniper Lane, Meadow Hill, Newcastle upon Tyne, Tyne and Wear, NE15 9FQ

Contact your local branch today for more information on this property:

**126A Trinity Street, Huddersfield, West Yorkshire, HD1 4DT, Tel: 01484 506211,  
admin@yellowbrickroadstateagents.co.uk, www.ybrea.co.uk**

These particulars, whilst believed to be accurate are set out as a general outline only for guidance and do not constitute any part of an offer or contract. Intending purchasers should not rely on them as statements of representation of fact, but must satisfy themselves by inspection or otherwise as to their accuracy. No person in this firm's employment has the authority to make or give any representation or warranty in respect of the property.

