



### 3 bed terraced house to buy in

Lady Beatrice Terrace, Houghton Le Spring, Tyne and Wear, DH4 4NE

**£185,000** Offers Over

 x3  x1  x1

Tenure

**Freehold**

### Property features

- ✓ Large Garden and Courtyard
- ✓ Double Driveway
- ✓ Three Bedrooms
- ✓ Large Terrace
- ✓ EPC Rating D

Garage parking

Garden

## Key Information

- ✓ Council Tax: Band A
- ✓ EPC Rating: D
- ✓ Heating supply: Oil

## Description

Situated in the highly sought-after area of New Herrington, this beautiful three-bedroom terraced home offers generous living space, characterful features and an exceptionally large garden, making it a fantastic opportunity for families and buyers seeking space both inside and out. Offered with no onward chain.

The property welcomes you through a grand entrance hall which sets the tone for the spacious accommodation throughout. To the ground floor there is a bright and comfortable living room, a separate dining room ideal for entertaining, and a well-appointed kitchen complemented by a useful utility area, providing excellent practicality for modern living.

To the first floor, the home continues to impress with three large double bedrooms, all offering ample space for furnishings. Completing the upstairs accommodation is a four-piece family bathroom suite alongside a separate WC, adding extra convenience for busy households.

Externally, the property truly stands out. There is a huge garden which is perfect for outdoor enjoyment, along with a double driveway providing ample off-street parking. To the rear, a private yard offers an additional low-maintenance outdoor space.

Located in the ever-popular village of New Herrington, this spacious and well-presented home is perfectly positioned close to local amenities, schools and transport links.

This sought-after property is not to be missed and early viewing is highly recommended.

Council Tax Band: A

Tenure: Freehold

Price: Offers Over £185,000

Property Type: Terraced House

USPs: Garden, Chain free

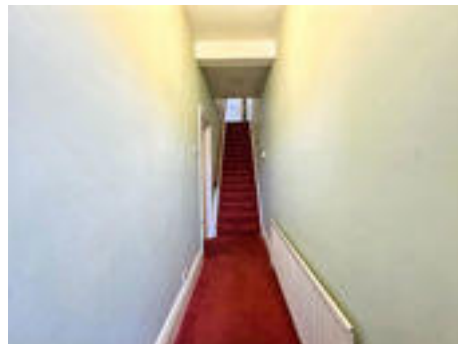
Parking: Garage

Heating: Oil

## External Front



## Entrance Hall



## Lounge

4.808m x 4.344m (15'9" x 14'3")



## Dining Room

4.447m x 4.803m (14'7" x 15'9")



## Kitchen

3.935m x 2.693m (12'10" x 8'10")



## First Floor Landing

6.781m x 1.96m (22'2" x 6'5")



## Bedroom One

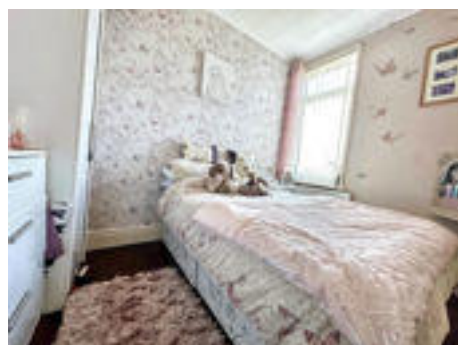
4.30m x 2.978m (14'1" x 9'9")



## Bedroom Two

## Bedroom Three

3.223m x 2.435m (10'6" x 7'11")



## Bathroom

2.709m x 1.456m (8'10" x 4'9")



## WC



## Rear Yard





Energy Efficiency Rating		Current	Potential
<i>Very energy efficient - lower running costs</i>			
(92-100) <b>A</b>			
(81-91) <b>B</b>			
(69-80) <b>C</b>			69
(55-68) <b>D</b>		56	
(39-54) <b>E</b>			
(21-38) <b>F</b>			
(1-20) <b>G</b>			
<i>Not energy efficient - higher running costs</i>			
<b>England, Scotland &amp; Wales</b>		EU Directive 2002/91/EC	

Lady Beatrice Terrace, Houghton Le Spring, Tyne and Wear, DH4 4NE

Contact your local branch today for more information on this property:

**126A Trinity Street, Huddersfield, West Yorkshire, HD1 4DT, Tel: 01484 506211,  
admin@yellowbrickroadestateagents.co.uk, www.ybrea.co.uk**

These particulars, whilst believed to be accurate are set out as a general outline only for guidance and do not constitute any part of an offer or contract. Intending purchasers should not rely on them as statements of representation of fact, but must satisfy themselves by inspection or otherwise as to their accuracy. No person in this firm's employment has the authority to make or give any representation or warranty in respect of the property.

