



3 bed terraced house to buy in

Lanton Street, Houghton Le Spring, Tyne and Wear, DH4 7BA

£124,950

🏠 x3 🚗 x1 🚿 x1

Tenure

Freehold

Property features

- ✓ Spacious Family Home
- ✓ Three Bedrooms
- ✓ Modern Kitchen/Dining Room
- ✓ North/West Facing Garden
- ✓ EPC Rating C

Off Street parking

Garden

Key Information

- ✓ Council Tax: Band A
- ✓ EPC Rating: C
- ✓ Heating supply: Air Source Heat Pump

Description

****SPACIOUS FAMILY HOME**THREE BEDROOMS**UTILTIY AREA**OFF ROAD PARKING**GENEROUS NORTH/WEST FACING GARDEN**BACKING ON TO HERRINGTON COUNTRY PARK****

Pattinson Estate Agents are pleased to welcome to the market this spacious family home, which boasts three bedrooms and North/West facing garden, located in the popular area of Lanton Street, New Herrington. Perfectly positioned within close proximity to local shops and other amenities, excellent transport and major road links via the A19. Also within walking distance to Shiney Row Primary School and backing on to Herrington country park, as well as a short driving distance to Houghton Le Spring Golf Course, Elba Park, Sunderland and Newcastle City Centres.

This impressive home is spacious throughout briefly comprises:- Entrance, utility area, modern kitchen/diner, a spacious lounge and a conservatory. To the first floor lies three bedrooms and a three piece family bathroom, externally to the front there is an enclosed yard, which gives the option of off road parking, to the rear there is a large North/West facing garden, that backs on to Herrington Country Park.

Early viewing comes highly recommended to appreciate the location, size and standard of this property. Please contact our Houghton Le Spring branch to arrange a viewing.

Council Tax Band: A

Tenure: Freehold

Price: £124,950

Property Type: Terraced House

USPs: Garden

Parking: Off Street

Heating: Air Source Heat Pump

Property Entrance

Property entrance is access via a composite door and leads to the utility area.

Utility Area

2.89m x 1.78m (9'5" x 5'10")

Convenient utility space with fitted full length units, work tops, plumbing for a washing machine and space for a dryer. Tile flooring, a radiator and two double glazed front aspect windows.



Kitchen/Dining Room

4.27m x 4.86m (14'0" x 15'11")

Modern kitchen/diner benefiting from a range of upper and lower units with contrasting worksurfaces, a stainless steel sink unit, an integrated oven with a gas hob and an original fireplace opening. Laminate flooring, tiled splash back, a radiator and a double glazed front aspect window. The kitchen/diner also gives access to the lounge and first floor staircase.



Lounge

3.95m x 4.85m (12'11" x 15'10")

Spacious lounge with carpet flooring, a feature fireplace, a radiator and a patio door leading to the conservatory.



Conservatroy

2.41m x 3.78m (7'10" x 12'4")

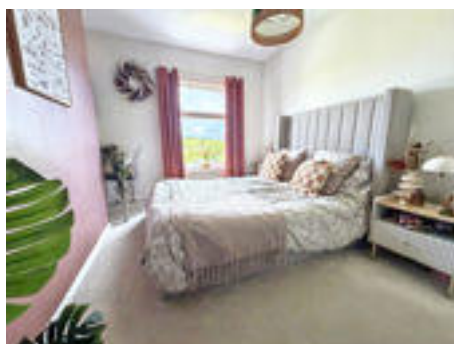
The conservatroy has double glazed windows, a wall heater, laminate flooring and a patio door leading to the rear garden.



Bedroom One

4.18m x 2.98m (13'8" x 9'9")

Double bedroom with carpet flooring, a radiator and a double glazed rear aspect window, which gives stunning views over Herrington Country Park.



Bedroom Two

4.09m x 2.67m (13'5" x 8'9")

Double bedroom with carpet flooring, a storage cupboard, a radiator and a double glazed front aspect window.



Bedroom Three

3.12m x 1.75m (10'2" x 5'8")

Third bedroom with carpet flooring, a radiator and a double glazed rear aspect window, which also gives picturesque views over Herrington Country Park.



Bathroom

2.50m x 2.08m (8'2" x 6'9")

Three piece bathroom benefiting from a paneled bath with a waterfall overhead shower, hand wash basin and a WC. Vinyl flooring, partly tiled walls, a column radiator and a double glazed window.

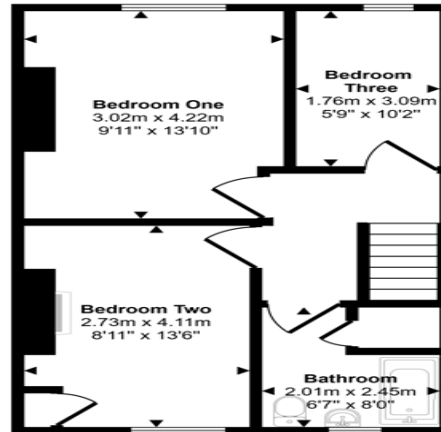
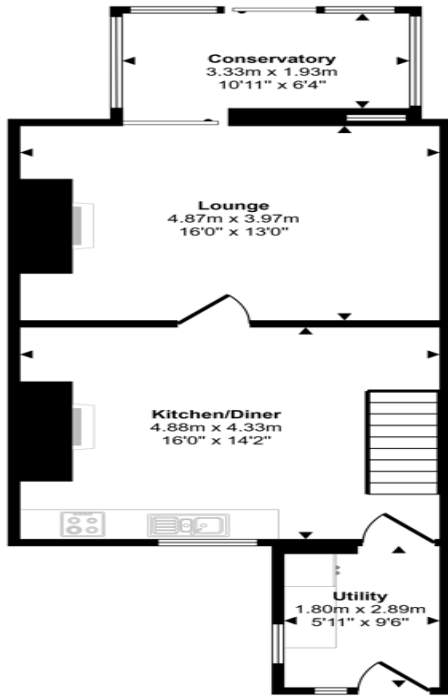


External

Externally to the front there is a fully enclosed yard, which gives the option of off road parking. To the rear lies a large North/West facing garden, which is laid to lawn with mature shrubs and bushes. The rear garden also benefits from not being over looked and backing onto Herrington Country Park.



Approx Gross Internal Area
96 sq m / 1033 sq ft



First Floor
Approx 42 sq m / 448 sq ft

Ground Floor
Approx 54 sq m / 585 sq ft

This floorplan is only for illustrative purposes and is not to scale. Measurements of rooms, doors, windows, and any items are approximate and no responsibility is taken for any error, omission or mis-statement. Icons of items such as bathroom suites are representations only and may not look like the real items. Made with Made Snappy 360.

Energy Efficiency Rating		
	Current	Potential
<i>Very energy efficient - lower running costs</i>		
(92-100) A		
(81-91) B		89
(69-80) C	72	
(55-68) D		
(39-54) E		
(21-38) F		
(1-20) G		
<i>Not energy efficient - higher running costs</i>		
England, Scotland & Wales		EU Directive 2002/91/EC

Lanton Street, Houghton Le Spring, Tyne and Wear, DH4 7BA

Contact your local branch today for more information on this property:

**126A Trinity Street, Huddersfield, West Yorkshire, HD1 4DT, Tel: 01484 506211,
admin@yellowbrickroadestateagents.co.uk, www.ybrea.co.uk**

These particulars, whilst believed to be accurate are set out as a general outline only for guidance and do not constitute any part of an offer or contract. Intending purchasers should not rely on them as statements of representation of fact, but must satisfy themselves by inspection or otherwise as to their accuracy. No person in this firm's employment has the authority to make or give any representation or warranty in respect of the property.

